

# Could the cytological evaluation of pericardial effusions illuminate our path?

## Perikardiyal efüzyonlarda sitolojik deęerlendirme yolumuzu aydınlatabilir mi?

Cenk EKMEKÇİ<sup>1</sup>, Sümeyye EKMEKÇİ<sup>2</sup>, Yelda DERE<sup>3</sup>, Yasemen ADALI<sup>4</sup>, Selim EKİNCİ<sup>1</sup>, Ali Kemal ÇABUK<sup>1</sup>, Pınar ÖKSÜZ<sup>2</sup>, Hatice SOLMAZ<sup>1</sup>, Öner ÖZDOĞAN<sup>1</sup>

<sup>1</sup>Saęlık Bilimleri Üniversitesi Tepecik Eğitim ve Arařtırma Hastanesi Kardiyoloji Klinięi, İzmir, Türkiye

<sup>2</sup>Saęlık Bilimleri Üniversitesi Tepecik Eğitim ve Arařtırma Hastanesi Patoloji Bölümü, İzmir, Türkiye

<sup>3</sup>Muęla Sıtkı Koçman Üniversitesi Tıp Fakültesi, Patoloji Anabilim Dalı, Muęla, Türkiye

<sup>4</sup>Çanakkale Onsekiz Mart Üniversitesi Tıp Fakültesi, Patoloji Anabilim Dalı, Çanakkale, Türkiye

### ABSTRACT

**Objective:** Pericardial effusion (PE) is a common clinical condition that can develop as a result of systemic or heart disease. In our study, we synthesized the cytopathological and clinical results of patients who underwent pericardiocentesis due to pericardial effusion.

**Method:** A total of 213 patients who underwent percutaneous pericardiocentesis between 2007-2017 were included in the study: their cytologic and histopathologic diagnoses were noted and their relations were examined.

**Results:** Hundred and thirty-two cases were male (61.9%), 81 were female (38.1%) and the mean of the study population age was 59.9 (min 13-max 97) years. Hundred and sixty-eight patients had benign (78.9%), 10 suspicious (4.6%), 3 non-diagnostic (1.4%) and 32 malignant cytologies (15.1%). Benign pericardial effusion was the most common diagnosis. Malignant cytology findings were interpreted as lung carcinoma (n=20: 62.5%), rhabdomyosarcoma (n=1: 3.1%), poorly differentiated adenocarcinoma (n=2: 6.2%), a gastrointestinal system carcinoma (n=4: 12.5%), undifferentiated epithelial tumor (n=1: 3.1%), breast carcinoma (n=1: 3.1%), and unspecified malignant tumor (n=3: 9%). Four (2.4%) of the 168 patients having diagnosis of benign cytology had previously received diagnosis of a malignant disease, however examination of cytological specimen. Did not reveal any malignancy. Three (30%) of the 10 patients with suspicious cytology, had received diagnosis of a malignant disease previously.

**Conclusion:** In developed countries, it is reported that more than 50% of the PE's are idiopathic. The percentage of cancer-associated PE's is 10-25%. In our study, 78.9% of our cases had a benign diagnosis, and 15.1% had malignant PE consistent with the literature findings. Cytological sampling in pericardial fluid is a method that can shed light on the diagnosis of many diseases.

**Keywords:** Pericardial effusion, pericardiocentesis, cytopathology

### ÖZ

**Amaç:** Perikardiyal efüzyon (PE) sistemik veya kalp hastalıklarının bir sonucu olarak gelişebilen yaygın bir klinik tablodur. Çalışmamızda, perikardiyal efüzyon nedeniyle perikardiyosentez uygulanan hastaların sitopatolojik ve klinik sonuçlarını sentezledik.

**Yöntem:** Çalışmaya 2007-2017 yılları arasında perkütan perikardiyosentez yapılan 213 hasta alınmış, sitolojik ve histopatolojik tanıları not edilmiş ve ilişkileri irdelenmiştir.

**Bulgular:** Olguların 132'si erkek (%61,9), 81'i kadın (%38,1) olup, yaş ortalaması 59,9 (min. 13 - maks. 97)'dir. Sitolojik bulgulara göre; 168'i benign sitoloji (%78,9), 10'u kuşku sitoloji (%4,6), 3'ü tanısal olmayan (%1,4) ve 32'si malign sitoloji (%15,1) tanısı almıştır. En sık benign perikardiyal efüzyon tanısı mevcuttur. Malign sitoloji tanılı olguların 20'si akcięer karsinomu (%62,5), 1'i rabdomyosarkom (%3,1), 2'si az diferansiye adenokarsinom (%6,2), 4'ü gastrointestinal sistem ilişkili karsinom (%12,5), 1'i indifferansiye epitelyal tümör (%3,1), 1'i meme karsinomu (%3,1), 3'ü tiplendirme yapılamayan malign tümör (%9) olarak yorumlanmıştır. Benign sitoloji tanılı 168 hastanın 4 (%2,4)'ünün malignite tanısı var olmakla birlikte, sitolojik örneęe yansıyan malignite bulgusu yoktur. Kuşku sitoloji olarak tanı almış 10 olgunun 3'ünün (%30) malignite tanısı mevcuttur.

**Sonuç:** Gelişmiş ülkelerde PE'lerin %50'sinden fazlasının idiyopatik olduęu bildirilmektedir. Kanser ilişkili PE'lerin oranı %10-25'tir. Çalışmamızda, literatürle uyumlu olarak %78,9 olgu benign, %15,1 olgu malign PE'dir. Perikardiyal sıvılarda sitolojik örnekleme birçok hastalığın tanısına ışık tutabilen bir inceleme yöntemidir.

**Anahtar kelimeler:** Perikardiyal efüzyon, perikardiyosentez, sitopatoloji

**Alındığı tarih:** 26.02.2018

**Kabul tarihi:** 08.03.2018

**Yazışma adresi:** Uzm. Dr. Cenk Ekmekci, Saęlık Bilimleri Üniversitesi Tepecik Eğitim ve Arařtırma Hastanesi, Yenişehir - Konak - İzmir - Türkiye  
**e-mail:** cenkekmekci@gmail.com

## INTRODUCTION

The pericardium is a double-walled sac containing the heart and roots of the great vessels. Pericardial sac has two layers; serous visceral layer and fibrous parietal layer. Pericardium stabilizes the heart to the mediastinum, protects against infections and provides easy movement to the heart <sup>(1,2)</sup>. The composition of the normal pericardial fluid can be described as an ultrafiltration of the plasma, except for its low protein content <sup>(3)</sup>. Some systemic and local disorders such as coronary artery diseases, malignancies, connective tissue disorders, infections, bleeding disorders and idiopathic causes may lead to pericardial effusion (PE) by disrupting the balance between production and drainage of pericardial fluid <sup>(4)</sup>.

Accurate and early diagnosis is very important in PEs. Pericardiocentesis is the gold standard for the identification of specific etiology. The cause of pathologic PE is not always clear and the etiology of more than 50% of the cases is unknown. In this study, the clinical and pathological features of PE patients who underwent pericardiocentesis were discussed. There is limited data on cytological evaluation of PE and its etiological role in PE. For this reason, we aimed to report the outcome of pericardial cytology in patients with PE who underwent pericardiocentesis.

## MATERIAL and METHOD

In this study, pericardial cytologies of 213 patients who underwent pericardiocentesis due to pericardial effusion between 2007 and 2017 were reviewed. Samples of hemodynamically important pericardial effusions obtained by percutaneous pericardiocentesis were sent to laboratories for cytopathological and microbiological examination. Patients who had experienced cardiac catheterization, pericardial tamponade after surgical intervention, and pericardial tamponade in the early period of acute myocardial infarction were excluded from the study.

Patients' clinical, radiological, pathological and laboratory information was obtained from hospital

electronic records. The identified cases were assessed cytologically by 3 pathologists. Patients whose cytological preparations could not be reached due to re-evaluation at different centers were excluded from the study. In terms of evaluation, cases without any cellular competence were accepted as having "non-diagnostic cytology". Patients who met diagnostic qualification criteria were classified as having benign, suspicious and malignant cytologies according to cytological findings. In case of malignant cytology, cytological typing was made according to whether there is any evidence of cytologic reflection of primary tumor. Patients having malignant cytology were compared clinically and radiologically with regard to the presence or absence of the primary focus, and the interpretation of the cytological material. The results of clinical and radiological methods of all patients were compared with cytological diagnoses.

## RESULTS

Hundred and thirty-two cases were male (61.9%), 81 were female (38.1%) and the mean age of the study population was 59.9 (min 13 - max 97) years. The patients had benign (n=168: 78.9%), suspicious (n=10: 4.6%), non-diagnostic (n=3: 1.4%) and malignant (n=32: 15.1%) cytologies. Benign pericardial effusion is the most common diagnosis (Table).

**Table. Findings**

	N (%)
Age	59.9 (min. 13 - max. 97)
Gender	
- Female	81 (38.1 %)
- Male	132 (61.9 %)
Pathologic diagnosis	
Benign	168 (78.9 %)
Suspicious	10 (4.6 %)
Malignant	32 (15.1 %)
Non-diagnostic	3 (1.4 %)
Malignant cytology findings	
- Lung carcinomas	20 (62.5%)
- Gastrointestinal system related carcinomas	4 (12.5 %)
- Poorly differentiated adenocarcinoma	2 (6.2 %)
- Undifferentiated malignant epithelial tumor	1 (3.1 %)
- Rhabdomyosarcom	1 (3.1 %)
- Breast carcinoma	1 (3.1 %)
- Malignant tumor which were not specified	3 (9%)

Malignant cytology findings were interpreted as lung carcinoma (n=20: 62.5%) (Figure 1-2), rhabdomyosarcoma (n=1: 3.1%), poorly differentiated adenocarcinoma (n=2: 6.2%), gastrointestinal system related carcinoma (n=4: 12.5%), undifferentiated epithelial tumor (n=1: 3.1%), breast carcinoma (n=1: 3.1%), and unspecified malignant tumor (n=3: 9.4%). Four (2.4%) of the 168 patients diagnosed as benign cytology were diagnosed as malignant previously and there was no malignancy finding in the cytologic specimen. Primary tumor of these cases was lung carcinoma. Three (30%) of the 10 patients having suspicious cytology, had previously received the diagnosis of malignancy. Primary tumors of these 3 cases were Hodgkin's lymphoma, esophageal and

breast carcinomas.

Most of the patients (n=27: 84.38%) having malignant pericardial fluid were male whilst 5 cases (15.62%) were female. The primary tumors of the female patients were lung carcinoma (n=2), breast carcinoma (n=1) and nonspecific malignant tumors (n=2).

## DISCUSSION

Normal pericardial sac contains 10-50 ml of pericardial fluid as a plasma ultrafiltrate which functions as a lubricant between the pericardial layers. Deposition over this level is considered to be pathological PE. Pericardial diseases can be part of a systemic disease or can be isolated. The most common cause of PE is idiopathic and in developed countries its incidence increases up to 50%. Mayosi et al. reported other common causes as cancer (10-25%), infections (15-30%), iatrogenic causes (15-20%) and connective tissue diseases (5-15%)<sup>(5,6)</sup>.

Metastatic tumors, especially lung and breast cancer, esophageal squamous cell carcinoma, malignant melanoma, thymic carcinoma, kidney, bladder malignancies as well as mesenchymal tumors like Ewing's sarcoma or hematological malignancies (mostly leukemia, non-Hodgkin's lymphoma and Hodgkin's lymphoma) are the most common causes for pathological PE<sup>(7)</sup>. Primary tumors of the pericardium such as mesothelioma, fibrosarcoma, lymphangioma, hemangioma, teratoma, neurofibroma and lipomas are rare<sup>(8)</sup>. The third most common cause is infection and it is often viral. The culprit viral agents include enteroviruses (coxsackieviruses, echoviruses), herpes viruses (EBV, CMV, HHV-6), adenoviruses and parvovirus B19. Among bacterial agents, Mycobacterium tuberculosis infection is the most frequent cause and it is more common in developing countries. Another common group is autoimmune diseases such as systemic lupus erythematosus, rheumatoid arthritis, scleroderma. Diseases such as amyloidosis, aortic dissection, pulmonary arterial hypertension, hypothyroidism, uremic pericarditis, chronic heart failure

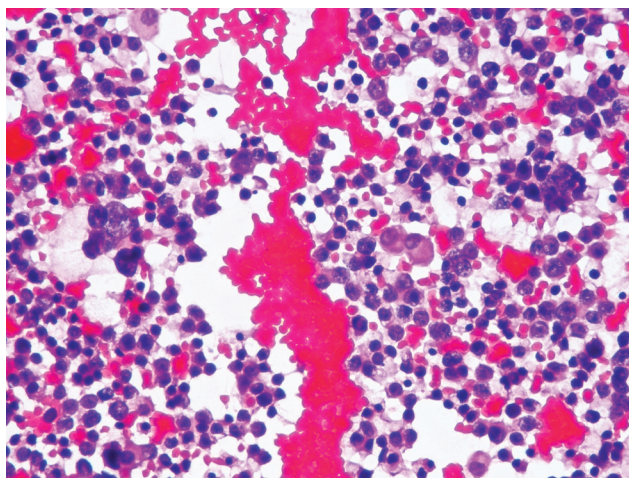


Figure 1. Malignant tumor cells (H&E, x400).

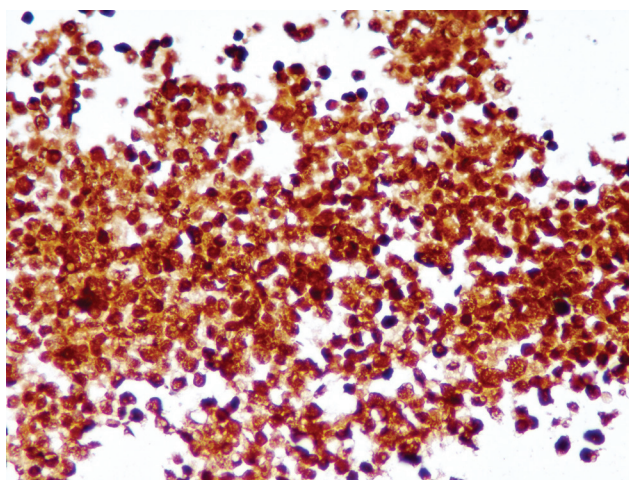


Figure 2. Pancytokeratin positivity in tumor cells (x400).



may rarely cause PE <sup>(9)</sup>.

In malignancies, pericardial effusion is a common and serious finding <sup>(10,11)</sup>. Gornik and colleagues reported that 43.8% of the patients who underwent pericardiocentesis had a malignant pericardial effusion <sup>(11)</sup>. Mukai et al. <sup>(12)</sup> reported that malignant invasion of the pericardium can be seen in approximately 10% of all cancer patients and that one third of these patients lost their lives as a result of pericardial effusion. The prognosis of the cases which have malignant cells in PE fluid were found to be worse than in cases without malignant cells <sup>(13)</sup>. Postmortem studies have shown that approximately 15-20% of cancer patients have metastatic disease in the heart and pericardium <sup>(14)</sup>. There is limited literature on the timing of malignant pericardial effusion in relation to primary malignancy. Holdener et al. <sup>(15)</sup> reported that in a group of patients with malignant pericardial effusion, the initial manifestation of the disease was malignant pericardial effusion in 50% of patients.

In oncological patients, the pericardial effusion may be caused by several different pathophysiological mechanisms, such as (a) direct or metastatic spread of the tumor (b) systemic tumor therapy-as a complication of radiation therapy, chemotherapeutic toxicity, or combination therapy (c) opportunistic infections occurring during antineoplastic therapies <sup>(16)</sup>. In cancer patients, pericardial effusions occur most commonly (>50%) due to benign lymphatic obstruction caused by the above-mentioned three mechanisms <sup>(17)</sup>. This is why the diagnosis of benign cytology should not distract the clinician from the likelihood of a cancer diagnosis. In our study, 4 (2.4%) of 168 patients diagnosed with benign cytology had previously received the diagnosis of malignancy. In some cases, pericardial effusion may be the first finding of the disease. Among the malignant pericardial effusions, lung cancer was most often diagnosed in accordance with our results. According to previous data in lung cancer patients the presence of malignant cells in pericardial effusions had been associated with worse survival relative to those without malignant cells <sup>(18)</sup>. Because of all these reasons,

rapid diagnosis and precise discrimination of malignant pericardial effusion has therapeutic and prognostic importance. Pericardiocentesis is the gold standard for elucidating specific etiology. The main clinical purpose of the cytopathological evaluation is to identify malignant tumor cells and this method has a sensitivity of 66%-100% <sup>(19,20)</sup>. In conclusion, detection of etiology in pericardial effusions is very challenging and time consuming. Cytopathological examination can illuminate us from a diagnostic point of view and significantly reduce the cost of pertinent examinations thanks to the rapid diagnosis of the disease.

## REFERENCES

1. Bonow RO, Mann DL, Zipes DP, Libby P. Braunwald's Heart Disease, 9<sup>th</sup> ed., Elsevier Saunders, Philadelphia, 2012. p.1651-2.
2. Jöbsis PD, Ashikaga H, Wen H, Rothstein EC, Horvath KA, McVeigh ER et al. <https://doi.org/10.1152/ajpheart.00967.2007>
3. Spodick DH. The Pericardium: A Comprehensive Textbook, Informa Healthcare, London, UK, 1997.
4. Akhter SA. The heart and pericardium. Thoracic Surgery Clinics. 2011;21:205-17. <https://doi.org/10.1016/j.thorsurg.2011.01.007>
5. Mayosi BM. Contemporary trends in the epidemiology and management of cardiomyopathy and pericarditis in sub-Saharan Africa. Heart. 2007;93:1176-83. <https://doi.org/10.1136/hrt.2007.127746>
6. Mayosi BM, Burgess LJ, Doubell AF. Tuberculous pericarditis. Circulation. 2005;112:3608-16. <https://doi.org/10.1161/CIRCULATIONAHA.105.543066>
7. Jeong TD, Jang S, Park CJ, Chi HS. Prognostic relevance of pericardial effusion in patients with malignant diseases. Korean J Hematol. 2012;47:237-8. <https://doi.org/10.5045/kjh.2012.47.3.237>
8. Karatolios K, Alter P, Maisch B. Differentiation of malignant from nonmalignant, inflammatory pericardial effusions with biomarkers. Herz. 2009;34:624-33. <https://doi.org/10.1007/s00059-009-3304-8>
9. Ristic AD, Imazio M, Adler Y, Anastasakis A, Badano LP, Brucato A et al. Triage strategy for urgent management of cardiac tamponade: a position statement of the European Society of Cardiology Working Group on Myocardial and Pericardial Diseases. Eur Heart J. 2014;35:2279-84. <https://doi.org/10.1093/eurheartj/ehu217>
10. Halfdanarson TR, Hogan WJ, Moynihan TJ. Oncologic emergencies: diagnosis and treatment. Mayo Clin Proc. 2006;81:835-48. <https://doi.org/10.4065/81.6.835>
11. Gornik HL, Gerhard-Herman M, Beckman JA. Abnormal cytology predicts poor prognosis in cancer patients with pericardial effusion. J Clin Oncol. 2005;23:5211-6. <https://doi.org/10.1200/JCO.2005.00.745>

12. Mukai K, Shinkai T, Tominaga K, Shimosato Y. The incidence of secondary tumours of the heart and pericardium: a 10 year study. *Jpn J Clin Oncol*. 1988;18:195-201.
13. He B, Yang Z, Zhao P, Li YJ, Wang JG. Cytopathologic analysis of pericardial effusions in 116 cases: Implications for poor prognosis in lung cancer patients with positive interpretations. *Diagn Cytopathol*. 2017;45(4):287-93. <https://doi.org/10.1002/dc.23671>
14. Laham RJ, Cohen DJ, Kuntz RE, Baim DS, Lorell BH, Simons M. Pericardial effusion in patients with cancer: outcome with contemporary management strategies. *Heart*. 1996;75:67-71. <https://doi.org/10.1136/hrt.75.1.67>
15. Holdener EE, Ryser DH, Schaermeli K, Spieler P, Angehrn W, Reutter FW et al. Malignant pericardial effusion-a sign of unfavorable prognosis. *Schweiz Med Wochenschr*. 1986;116:366-70.
16. Refaat M, Katz W. Neoplastic pericardial effusion. *Clin Cardiol*. 2011;34:593-8. <https://doi.org/10.1002/clc.20936>
17. Wilkes JD, Fidias P, Vaickus L, Perez RP. Malignancy-related pericardial effusion. 127 Cases from the Roswell Park Cancer Institute. *Cancer*. 1995;76:1377-87. [https://doi.org/10.1002/1097-0142\(19951015\)76:8<1377::AID-CNCR2820760813>3.0.CO;2-M](https://doi.org/10.1002/1097-0142(19951015)76:8<1377::AID-CNCR2820760813>3.0.CO;2-M)
18. El Haddad D, Iliescu C, Yusuf SW, William NW, Khair TH, Song J et al. Outcomes of cancer patients undergoing percutaneous pericardiocentesis for pericardial effusion. *J Am Coll Cardiol*. 2015;66:1119-28. <https://doi.org/10.1016/j.jacc.2015.06.1332>
19. Imazio M, Adler Y. Management of pericardial effusion. *Eur Heart J*. 2013;34:1186-97. <https://doi.org/10.1093/eurheartj/ehs372>
20. Dragoescu EA, Liu L. Pericardial fluid cytology: An analysis of 128 specimens over a 6-year period. *Cancer Cytopathol*. 2013;121:242-51. <https://doi.org/10.1002/cncy.21246>